

Answer complex legal questions, such as **“what’s market?”** in seconds with the power of generative AI.

Until now, your firm’s collective experience has been locked away in siloed systems and transaction documents, making it nearly impossible to capitalize on.

By integrating Litera Foundation with our new insights and deal analysis platform, you can leverage your firm’s experience to get concrete answers to complex legal questions, rather than depend on unreliable search results.



Centralize and transform your firm’s data into complete profiles of matters, clients, and lawyers.



Automatically extract deal points from transaction documents and pair them with matter profiles.



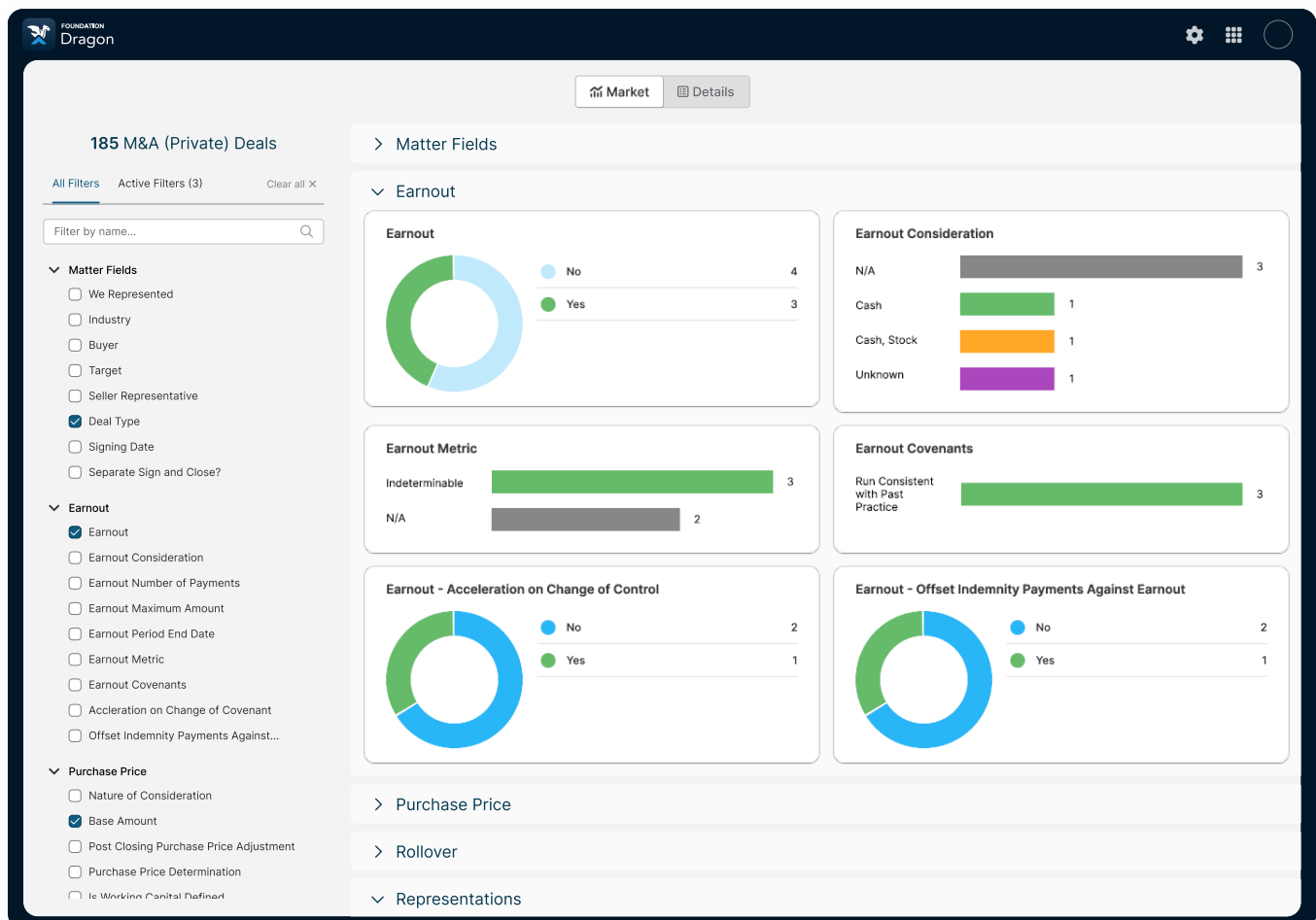
Turn your firm’s experience into negotiation intelligence that drives value for your clients.



Precedent Locations: Easily find deal precedents that compare to current deals and find answers to questions like “what’s market”.

Answer Complex Legal Questions Like:

- Find precedent Stock Purchase Agreements from PE deals where we represented sellers that included a reverse break fee and an earn-out.
- Find the last \$100-250m EV private equity deal in Tech where our firm represented sellers with current opposing counsel and what terms they agreed to.
- Find how the terms in a first draft of a purchase agreement compare to recent similar deals.
- Find precedent reverse break fee provisions from public M&A deals where my firm represented buyers in the telco sector and the partner was Sarah Campbell.
- Find out what our firm's typical opening position is when representing sellers in a \$1bn+ EV PE deal in O&G gas sector and how it compares to final negotiated position.



Visit our website to learn about [Foundation Dragon](#) or [request a demo](#) with our team.